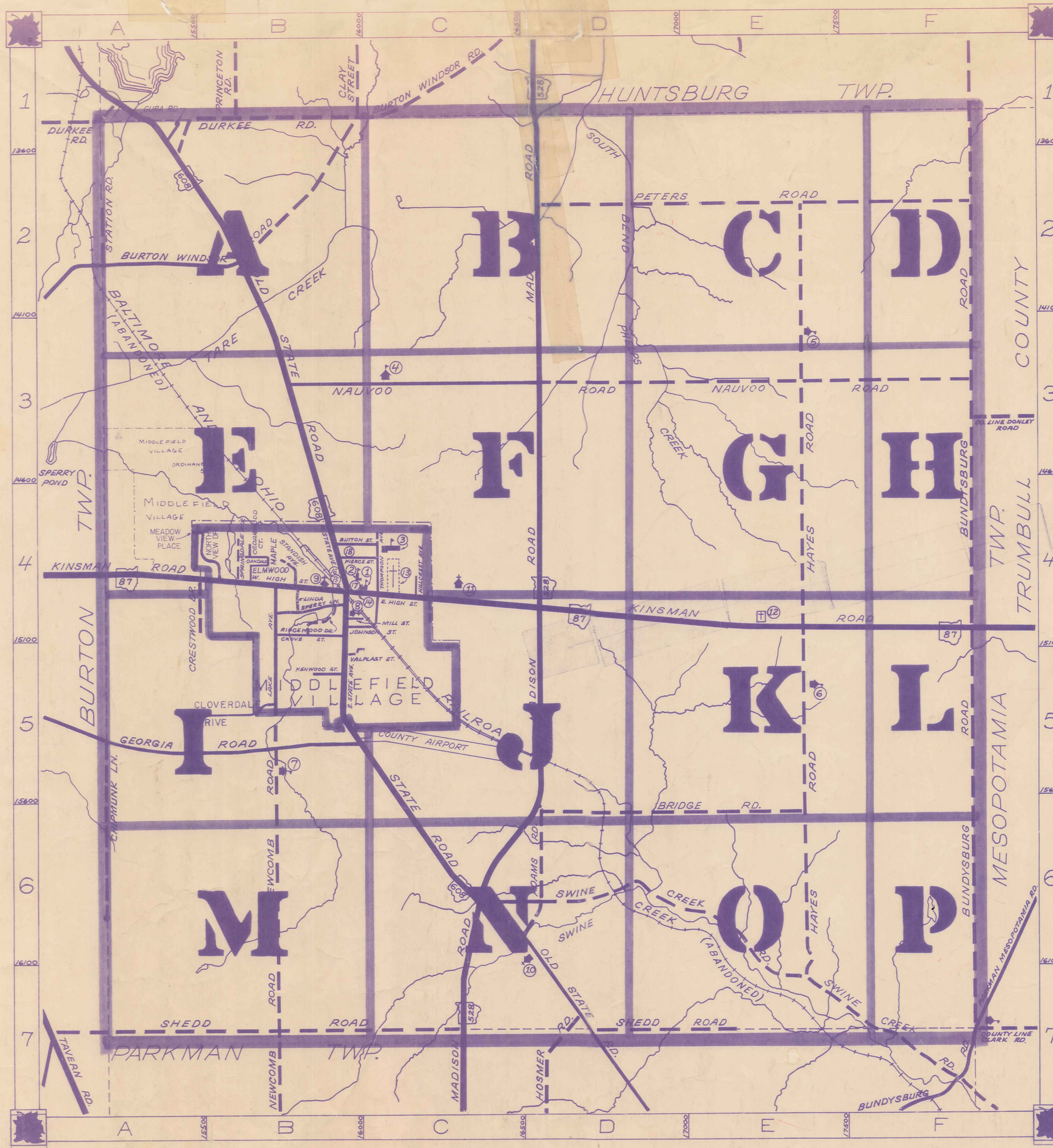


ROAD INDEX



M.V. = MIDDLEFIELD VILLAGE

A	ADAMS RD. D6	I	SHEDD RD. A7-E7
B	BRIDGE RD. D6-E6	J	S. STATE AVE. (M.V.) B4-B5
C	BUNDYSBURG RD. F1-F7	K	SPERRY LN. (M.V.) B4
D	BURTON WINDSOR RD. A2-B1	L	SPRINGDALE AVE. (M.V.) B4
E	BUTTON ST. (M.V.) B4	M	STATION RD. A1-A2
F	CHIPPUNK LN. A5-A6	N	SWINE CREEK RD. C6-F7
G	CRESTWOOD DR. B4	O	SPRINGDALE AVE. (M.V.) B4
H	CLOVERDALE DR. B5	P	LAKE AVE. (M.V.) B4-B5
I	CEDARWOOD CT. (M.V.) B4	Q	LINDA AVE. (M.V.) B4
J	DURKEE RD. A1-B1	R	THOMPSON AVE. (M.V.) C4
K	MADISON RD. D1-C7	S	MADISON RD. D1-C7
L	MAPLE AVE. (M.V.) B4	T	MAPLE AVE. (M.V.) B4
M	MEADOW VIEW PL. A4-B4	U	MILL ST. (M.V.) B4
N	MILL ST. (M.V.) B4	V	E. HIGH ST. (M.V.) B4-C4
O	NAUVOO RD. B3-F3	W	ELMWOOD ST. M.V.
P	NEWCOMB RD. B5-B7	X	NAUVOO RD. B3-F3
Q	N. STATE AVE. (M.V.) B4	Y	NEWCOMB RD. B5-B7
R	NORTH VIEW DR. (M.V.) B4	Z	N. STATE AVE. (M.V.) B4
S	GEORGIA RD. A5-B5		OLD STATE RD. A1-D7
T	GROVE ST. (M.V.) B4		OAKDALE (M.V.) B4
U	GURA RD. A1		
V	HAYES RD. E2-E7		
W	HILLCREST AVE. (M.V.) C4		
X	HOSMER RD. D7		
Y	PETERS RD. D2-F2		
Z	PIERCE ST. (M.V.) B4		

MIDDLEFIELD TOWNSHIP

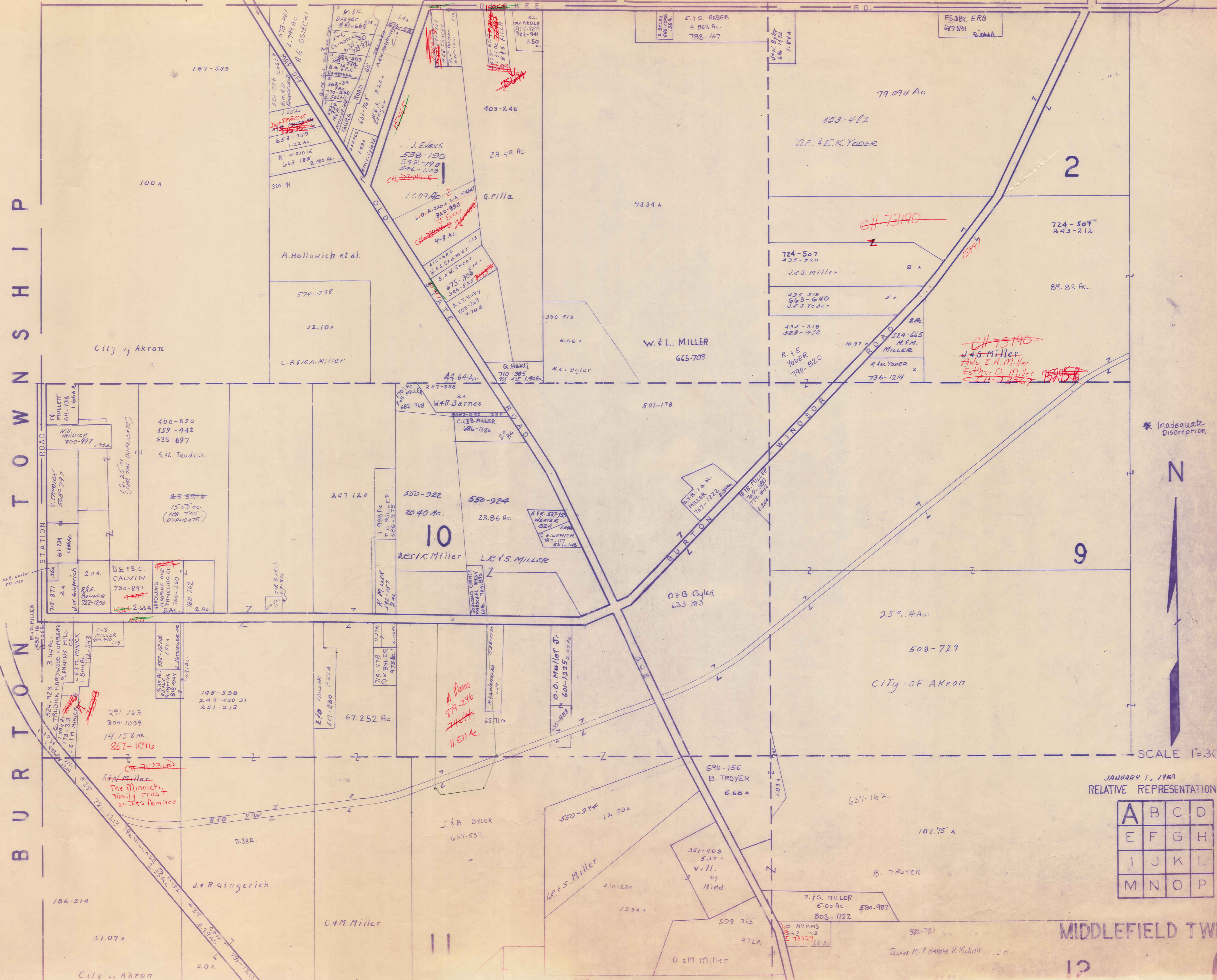
SCALE: 1"=2000'

ROBERT L. PHILLIPS,
GEORGIA COUNTY ENGINEER

--- UNPAVED ROADS
 ——— PAVED ROADS
 - - - RAILROAD
 - - - TOWNSHIP LINE
 - - - COUNTY LINE
 - - - VILLAGE LINE

- 1 MIDDLEFIELD ELEMENTARY SCH.
- 2 CARDINAL JUNIOR HIGH SCHOOL
- 3 CARDINAL HIGH SCHOOL
- 4 AMISH SCHOOL
- 5 AMISH SCHOOL
- 6 AMISH SCHOOL
- 7 AMISH SCHOOL
- 8 THE FIRST METHODIST CHURCH
- 9 WESLEYAN METHODIST CHURCH
- 10 MENNONITE CHURCH
- 11 ST. LUCYS CATHOLIC CHURCH
- 12 CEMETERY
- 13 MIDDLEFIELD CEMETERY
- 14 UNITED STATES POST OFFICE
- 15 MIDDLEFIELD VOL. FIRE DEPT.
- 16 MIDDLEFIELD VILLAGE HALL
- 17 MIDDLEFIELD PUBLIC LIBRARY
- 18 BETHESDA NURSING HOME

BURTON TOWNSHIP



* Inadequate Description

N

SCALE 1"=300'

JANUARY 1, 1969
RELATIVE REPRESENTATION

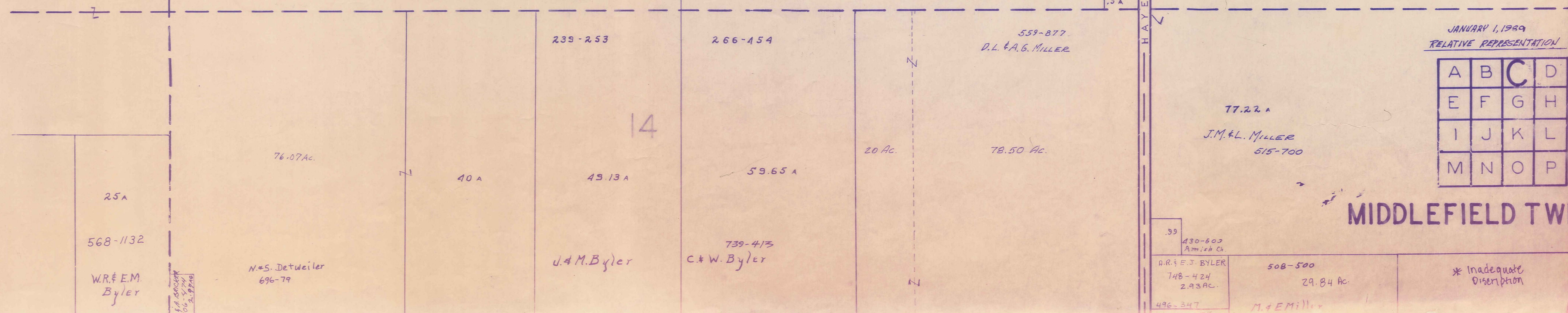
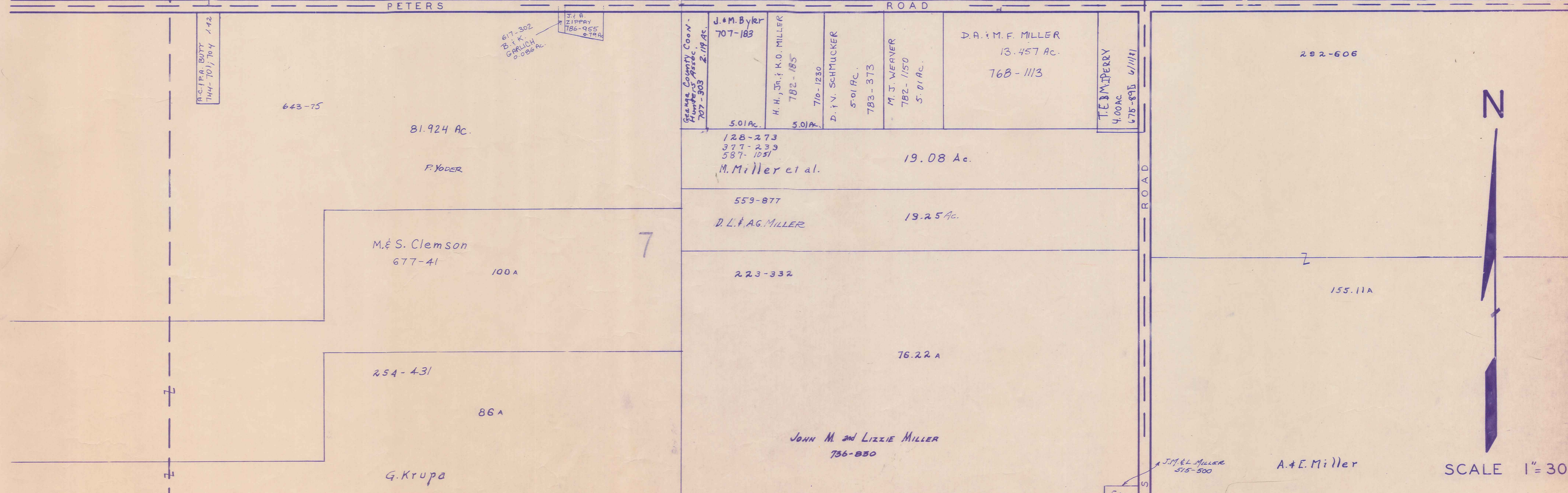
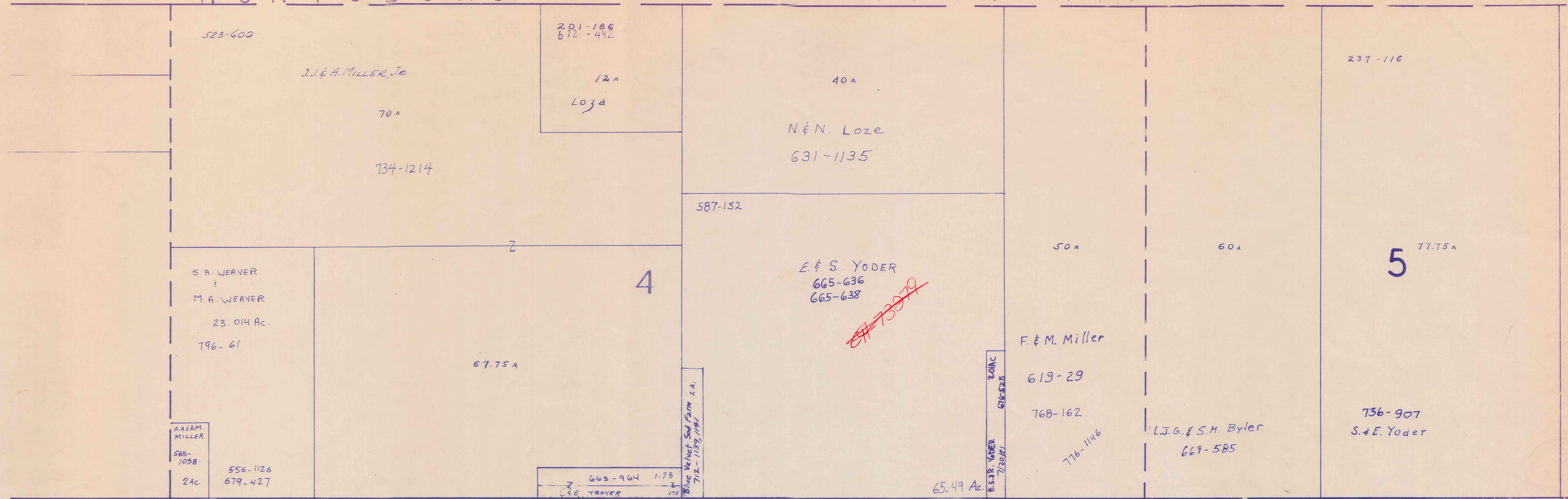
A	B	C	D
E	F	G	H
I	J	K	L
M	N	O	P

MIDDLEFIELD TWP

12

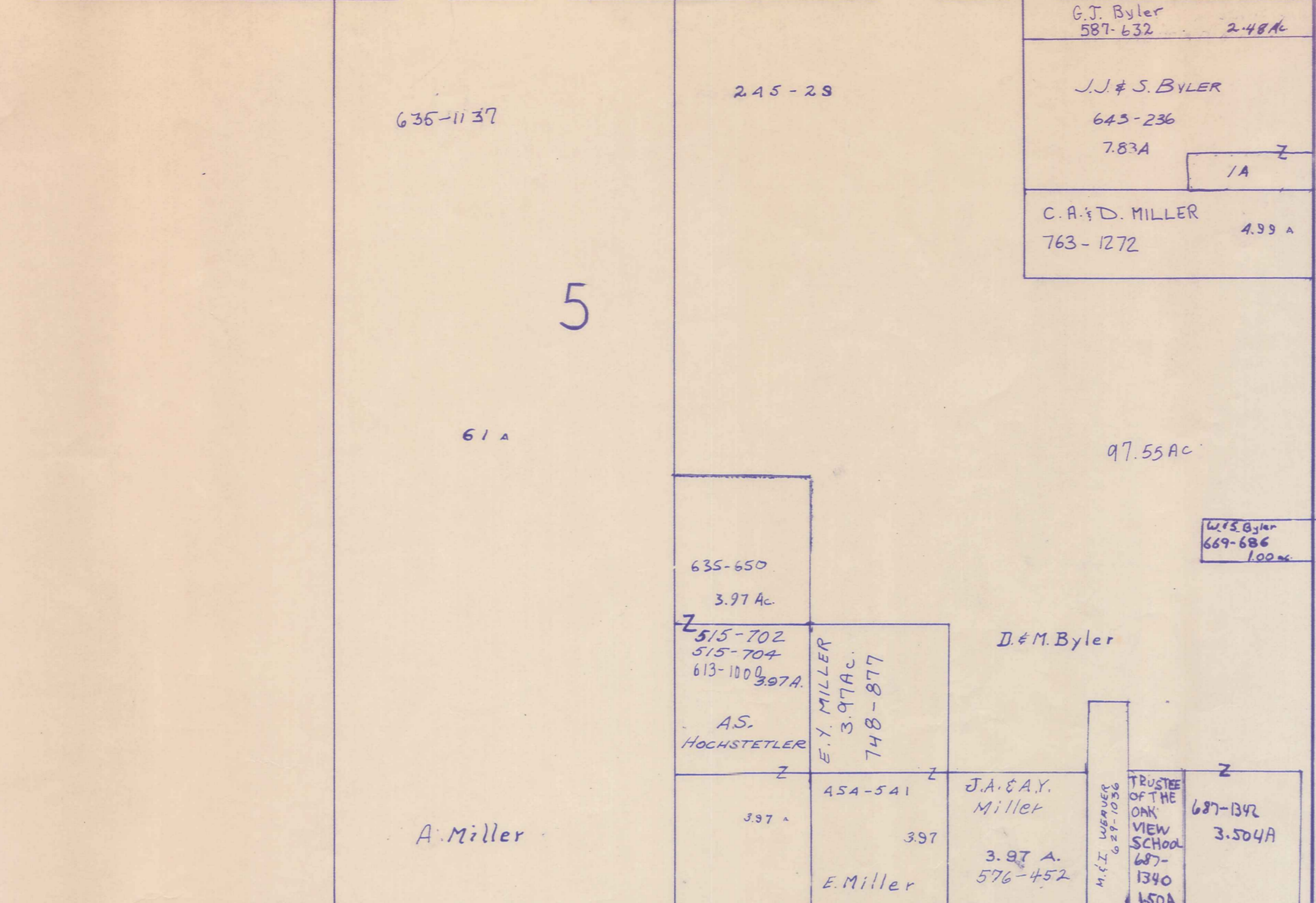
HUNTSBURG

TOWNSHIP

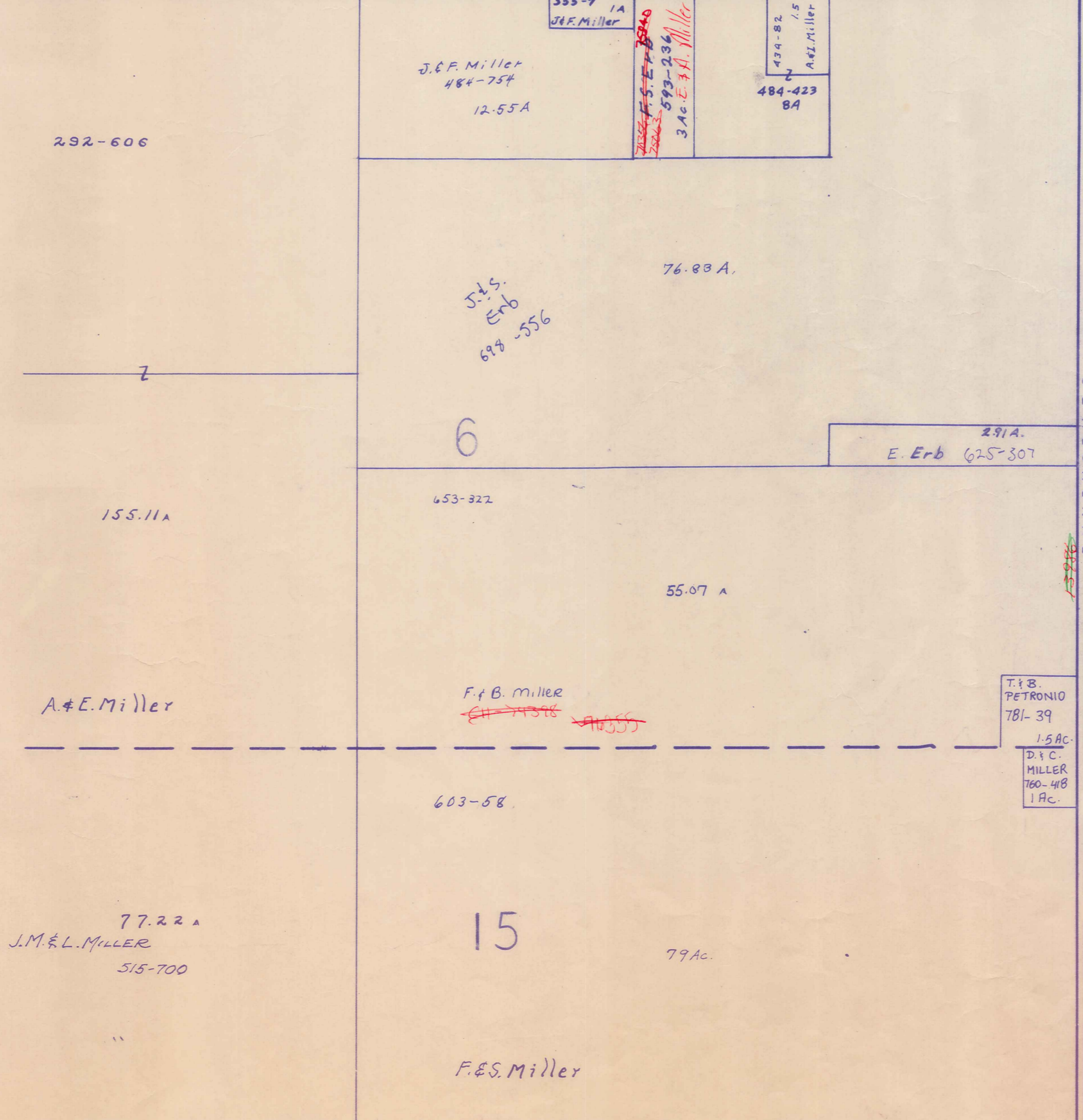


SCALE 1" = 300'

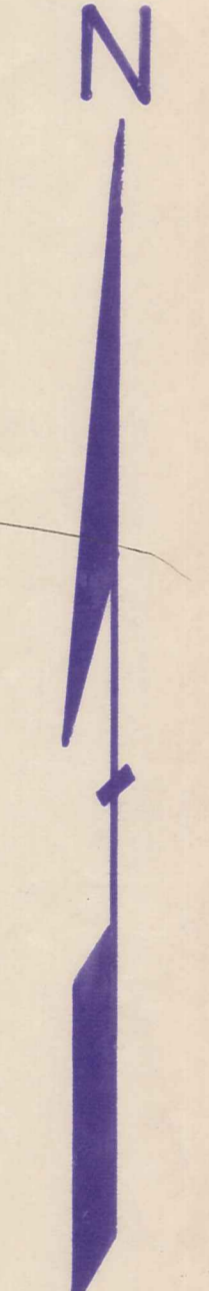
HUNTSBURG TOWNSHIP



PETERS ROAD



BUNDYSBURG ROAD
TRUMBULL COUNTY



SCALE 1" = 300'

JANUARY 1, 1989
RELATIVE REPRESENTATION

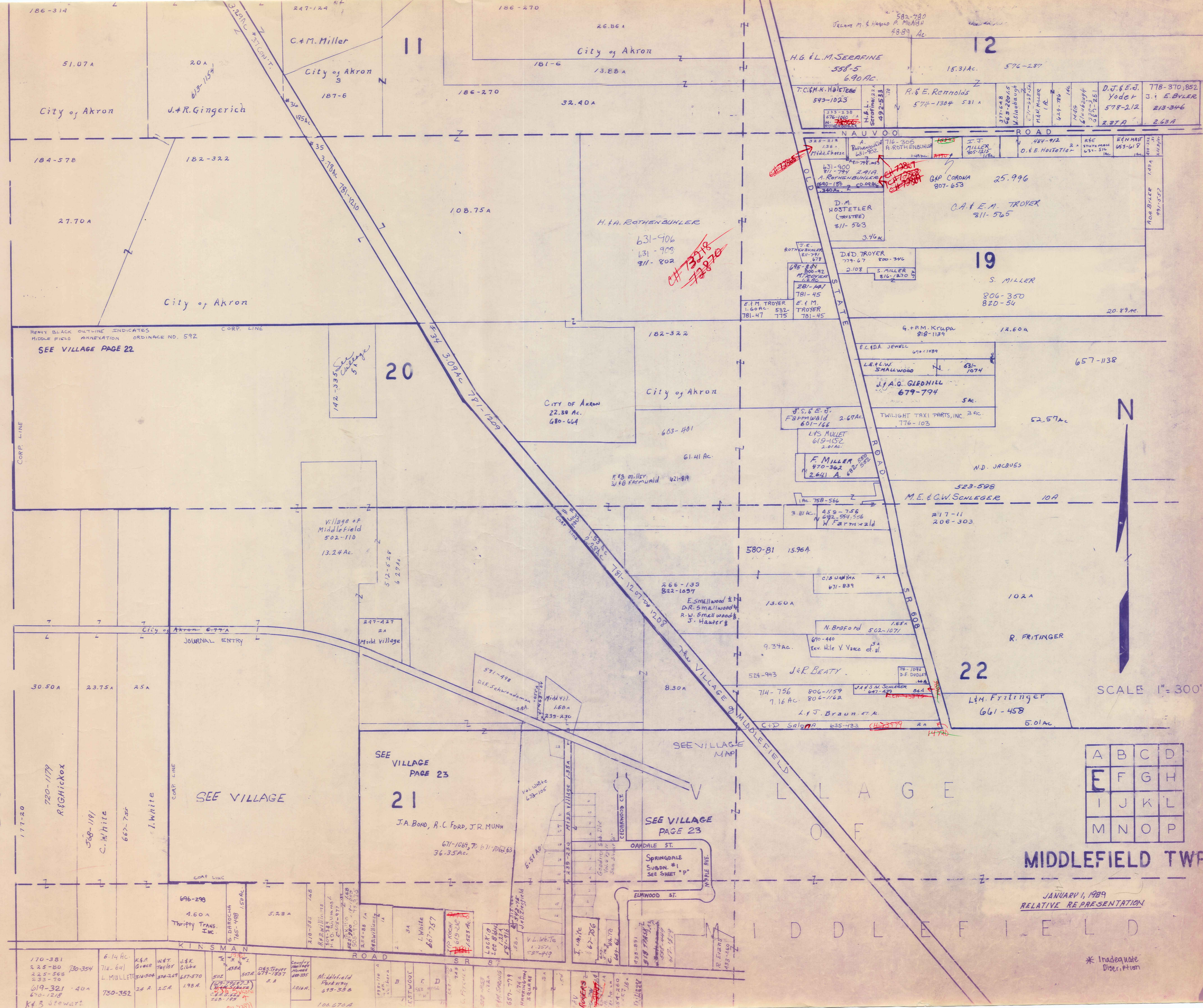
A	B	C	D
E	F	G	H
I	J	K	L
M	N	O	P

* Inadequate Description

MIDDLEFIELD TWP.

TOWNSHIP

BURTON

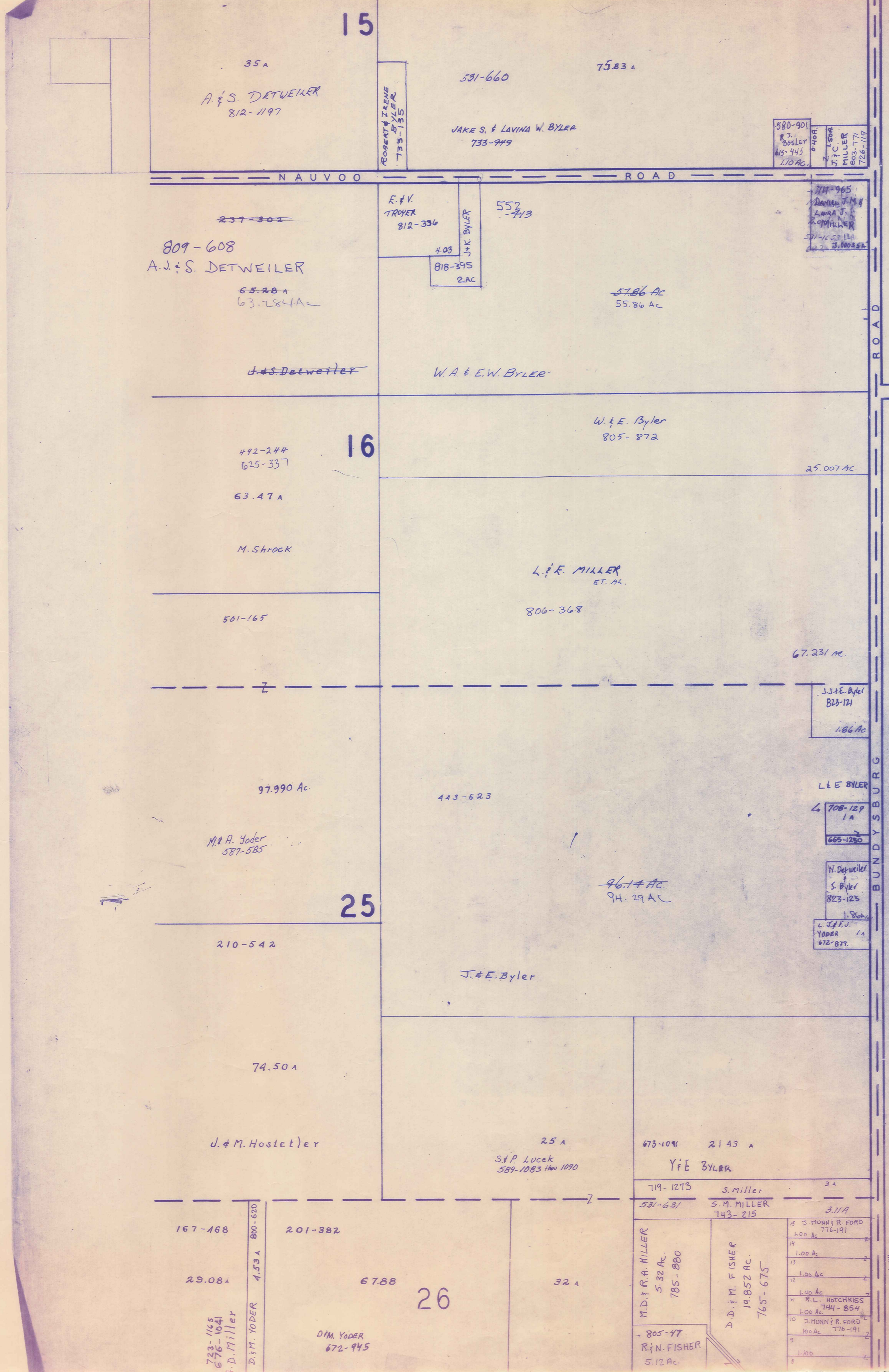


A	B	C	D
E	F	G	H
I	J	K	L
M	N	O	P

MIDDLEFIELD TWP

JANUARY 1, 1989
RELATIVE REPRESENTATION

* Inadequate Description

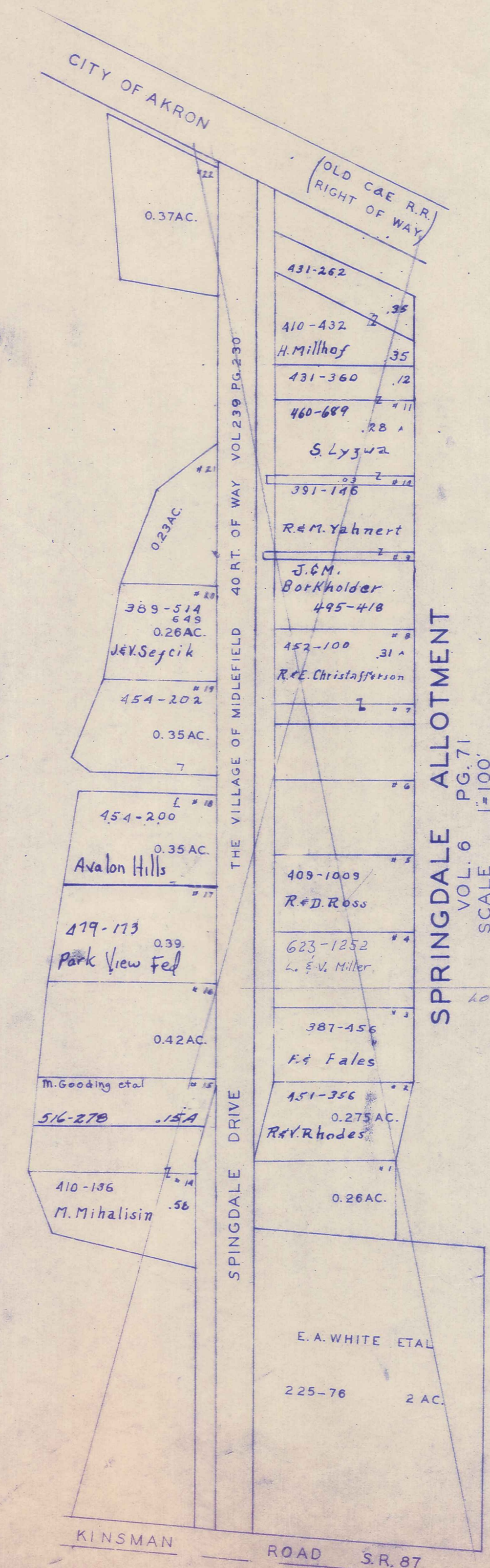


T R U M B U L L C O U N T Y

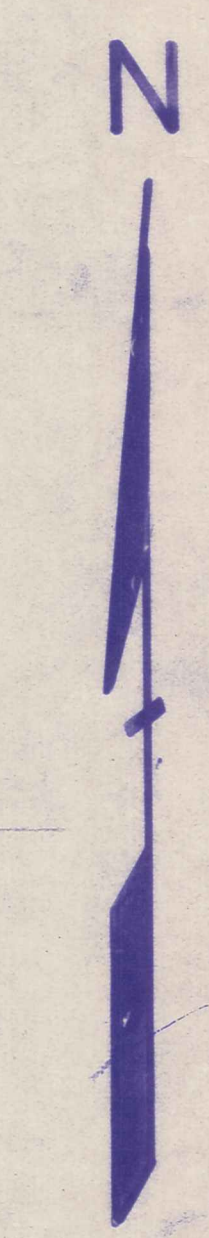
KINSMAN ROAD 87

645-881 A 4674 558-80 A. L. WOODCOCK 637-143 H. R. HARRIS ESQ.	509-725 D 774-501 M. HARRIS V. C. PHILIP
217-600 4.515	513-240 11 W. McLaughlin
MARIA TOPARO 725-114	12 J. DEMOSLEY 627-573
R. M. PETRICK 755-991	13 L. F. BARKLEY 690-1086
4 755-991	14 Z. DABROS J. DABROS B. DABROS 706-248
J. E. GINSICH 517-574	15 514-223 582-395
5 643-950	Susan Kilko 576-910 16
DA M. E. KUMAR 562-605	J. & D. JORDAN 17
7 R. E. D. SMITH 629-295	R. H. HARRINGTON 791-256
8 R. E. MILLER 496-353	A. R. BOCHNER 4.85-485 653-624
9 D. & V. KURTZ 749-386	18 580-278 545 YODER, JR.
10 D. R. HARRINGTON	T. R. MOSS 20 703-1299

315-363 Agreement of Restriction
CRESTWOOD SUB. DIV.
VOL. 6 PG. 77
LOT 30
SCALE 1"=200'



SPRINGDALE ALLOTMENT
VOL. 6 PG. 71
SCALE 1"=100'
See Page "P"



SCALE 1"=300'

* Inadequate Description

JANUARY 1, 1989

A	B	C	D
E	F	G	H
I	J	K	L
M	N	O	P

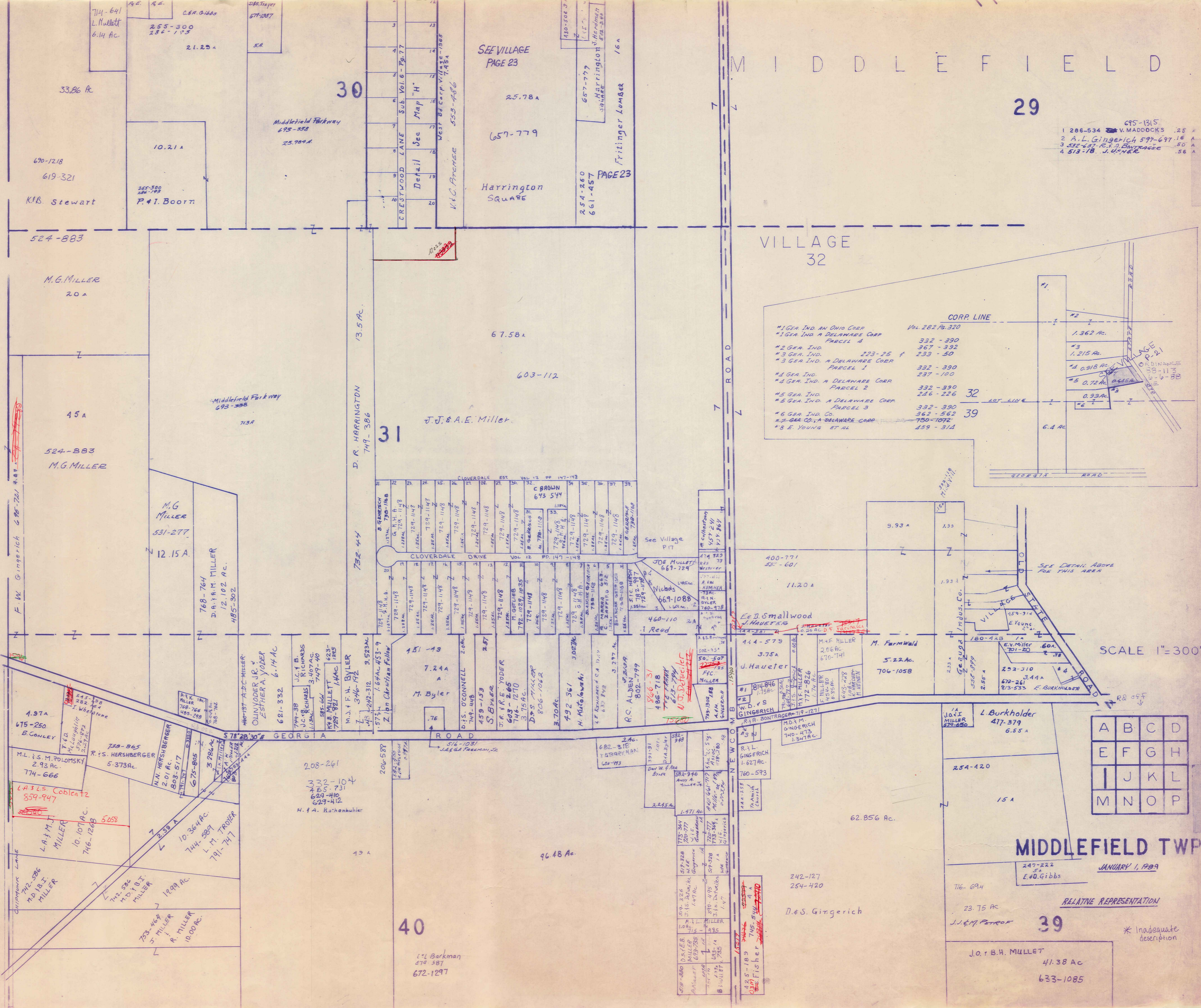
MIDDLEFIELD TWP.
RELATIVE REPRESENTATION

BURTON TOWNSHIP

MIDDLEFIELD

29

- 1 286-534 V. MADDOCKS .25 A
- 2 A.L. GINGERICH 597-697 .16 A
- 3 532-637 R. J. BARRAGEE .50 A
- 4 513-78 J. H. WARE .56 A



VILLAGE 32

- CORP. LINE
- *1 GEN. IND. AN OHIO CORP Vol. 282 Pg. 320
 - *1 GEN. IND. A DELAWARE CORP Parcel A 332-390
 - *2 GEN. IND. 223-25 367-392
 - *3 GEN. IND. A DELAWARE CORP Parcel 1 332-390
 - *4 GEN. IND. 237-100
 - *4 GEN. IND. A DELAWARE CORP Parcel 2 332-390
 - *5 GEN. IND. 226-226
 - *5 GEN. IND. A DELAWARE CORP Parcel 3 332-390
 - *6 GEN. IND. CO. 362-562
 - *7 GEN. IND. A DELAWARE CORP 750-1072
 - *8 E. YOUNG ET AL 459-314

SCALE 1"=300'

A	B	C	D
E	F	G	H
I	J	K	L
M	N	O	P

MIDDLEFIELD TWP

JANUARY 1, 1909

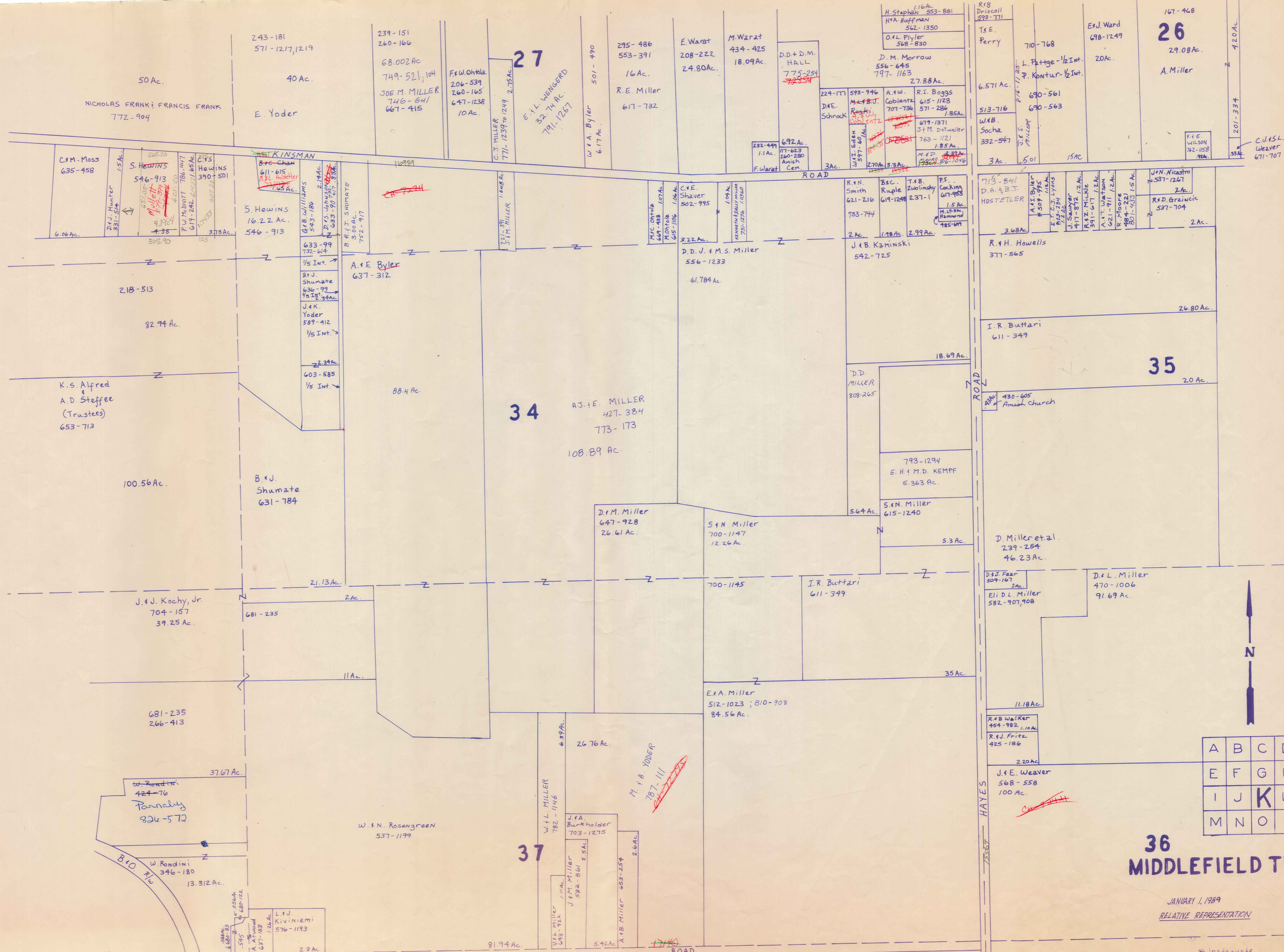
RELATIVE REPRESENTATION

* Inadequate description

3800'

40

39

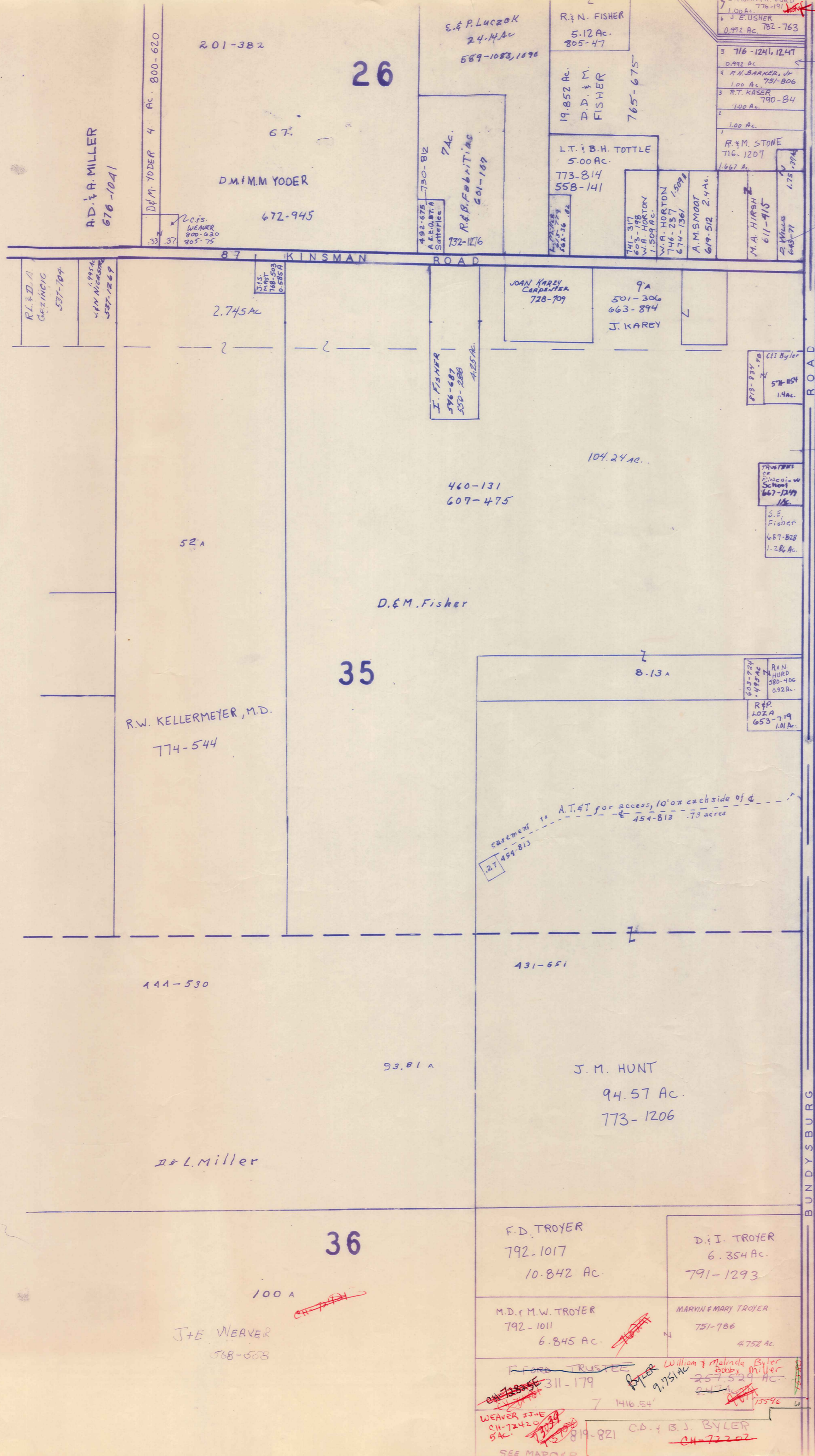


A	B	C	D
E	F	G	H
I	J	K	L
M	N	O	P

36 MIDDLEFIELD TWP

JANUARY 1, 1989
RELATIVE REPRESENTATION

* Inadequate description



BUNDYSBURG ROAD



SCALE 1" = 300'

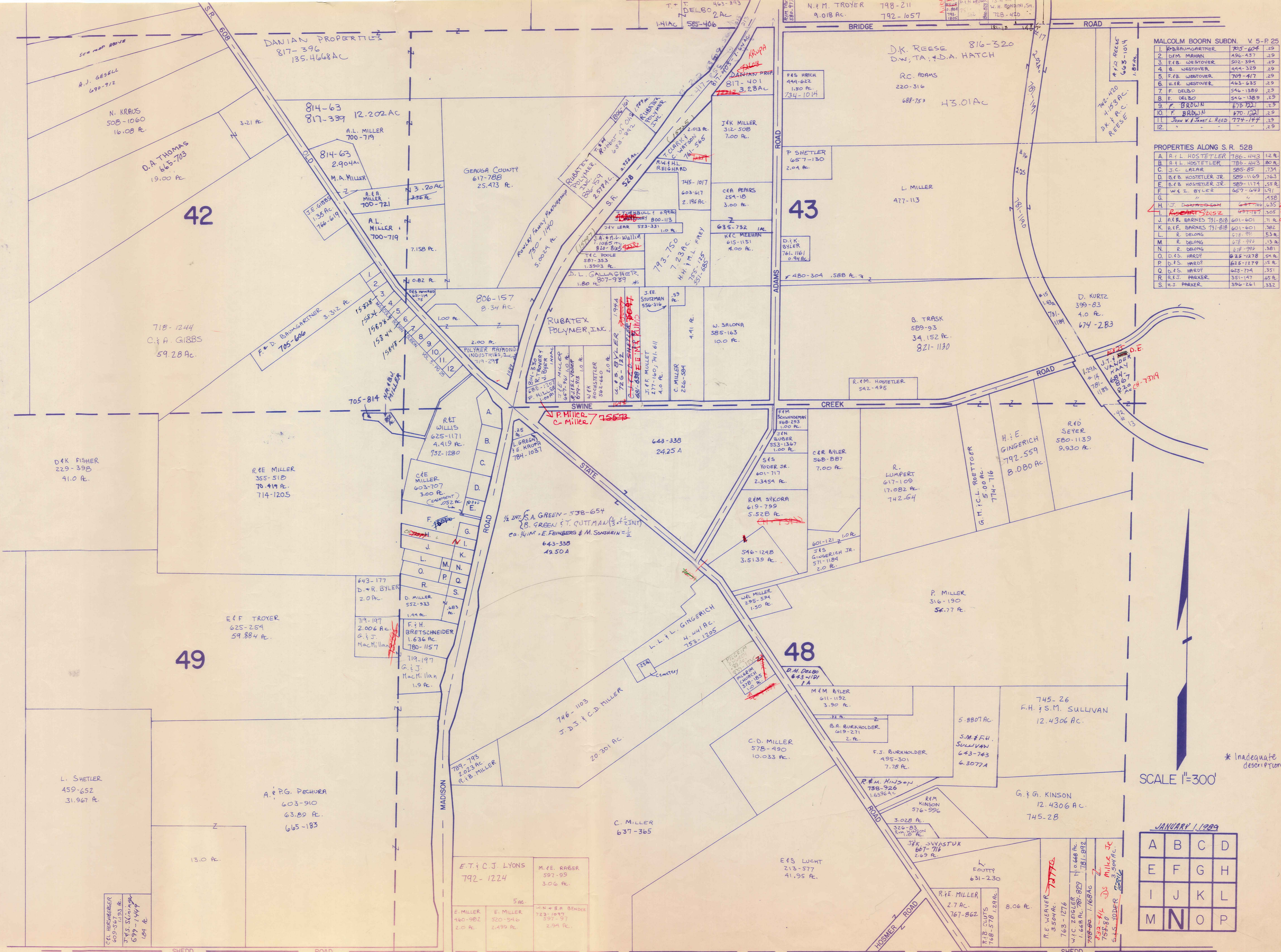
JANUARY 1, 1989

A	B	C	D
E	F	G	H
I	J	K	L
M	N	O	P

MIDDLEFIELD TWP.

RELATIVE REPRESENTATION

* Inadequate Description



MALCOLM BOORN SUBDN. V. 5-P. 25

1	BRUBUMGARTNER	705-604	2.29
2	D.M. MANN	490-437	2.29
3	F.B. WESTOVER	502-394	2.29
4	B. WESTOVER	444-329	2.29
5	F.B. WESTOVER	709-417	2.29
6	H.R. WESTOVER	463-635	2.29
7	F. DELBO	546-1389	2.29
8	F. DELBO	546-1389	2.29
9	F. BRDWIN	670-721	2.29
10	F. BRDWIN	670-721	2.29
11	John W. Javet L. Reed	774-144	2.29
12			2.29

PROPERTIES ALONG S.R. 528

A	A.L. HOSTETLER	786-443	12.29
B	A.L. HOSTETLER	786-443	12.29
C	J.C. LARAR	585-85	7.34
D	B.F.B. HOSTETLER JR.	509-1169	7.63
E	B.F.B. HOSTETLER JR.	509-1174	5.58
F	W & L. BYLER	667-648	1.91
G			4.50
H	J. D. BARNES	601-601	2.35
I	R. BARNES	601-601	2.35
J	R. BARNES	601-601	2.35
K	R. BARNES	601-601	2.35
L	R. DELONG	678-94	1.38
M	R. DELONG	678-94	1.38
N	R. DELONG	678-94	1.38
O	D.S. HARDY	625-1278	5.4
P	D.S. HARDY	625-1279	1.5
Q	D.S. HARDY	625-1274	3.51
R	R.S. PARKER	351-147	6.5
S	H.J. PARKER	356-261	3.32

* Inadequate description

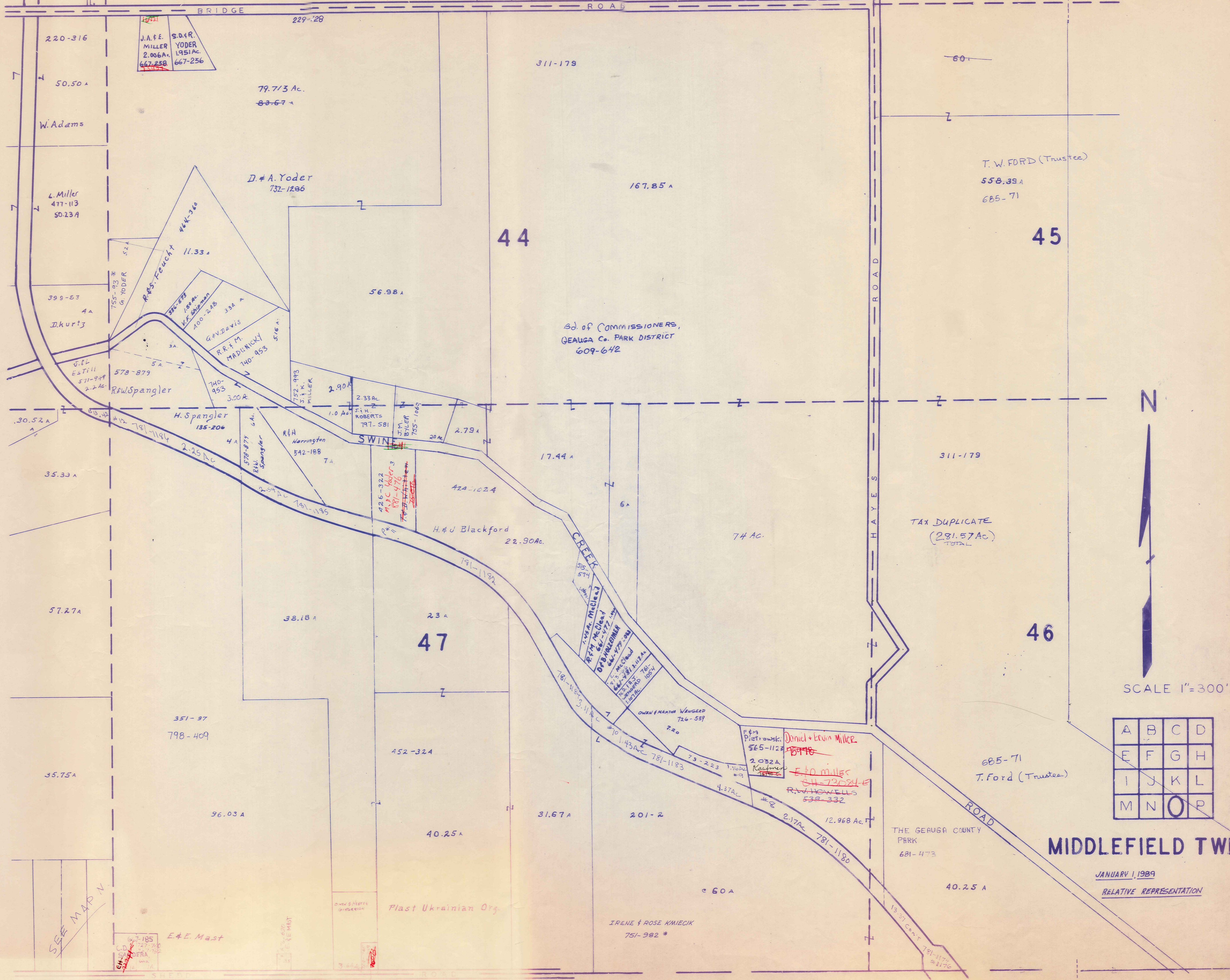
SCALE 1"=300'

JANUARY 1, 1999

A	B	C	D
E	F	G	H
I	J	K	L
M	N	O	P

MIDDLEFIELD TWP. "N"
RELATIVE REPRESENTATION

P A R K M A N T O W N S H I P



SCALE 1"=300'

A	B	C	D
E	F	G	H
I	J	K	L
M	N	O	P

MIDDLEFIELD TWP.

JANUARY 1, 1989
RELATIVE REPRESENTATION

SEE MAP N

* Inadequate description

